

## Antenna Installation

### 1. Antenna placing



3G/4G Antenna  
mounted upright on  
metal surface



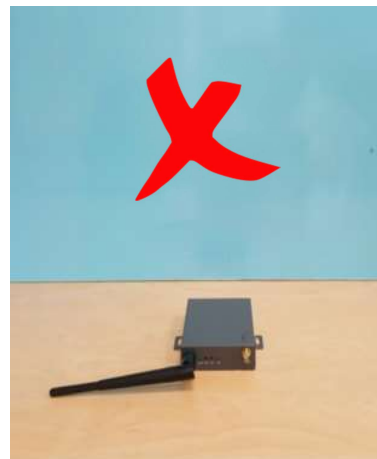
3G/4G Antenna  
mounted upright on  
non-metal surface



3G/4G Antenna is  
horizontal



WiFi antenna is  
mounted upright

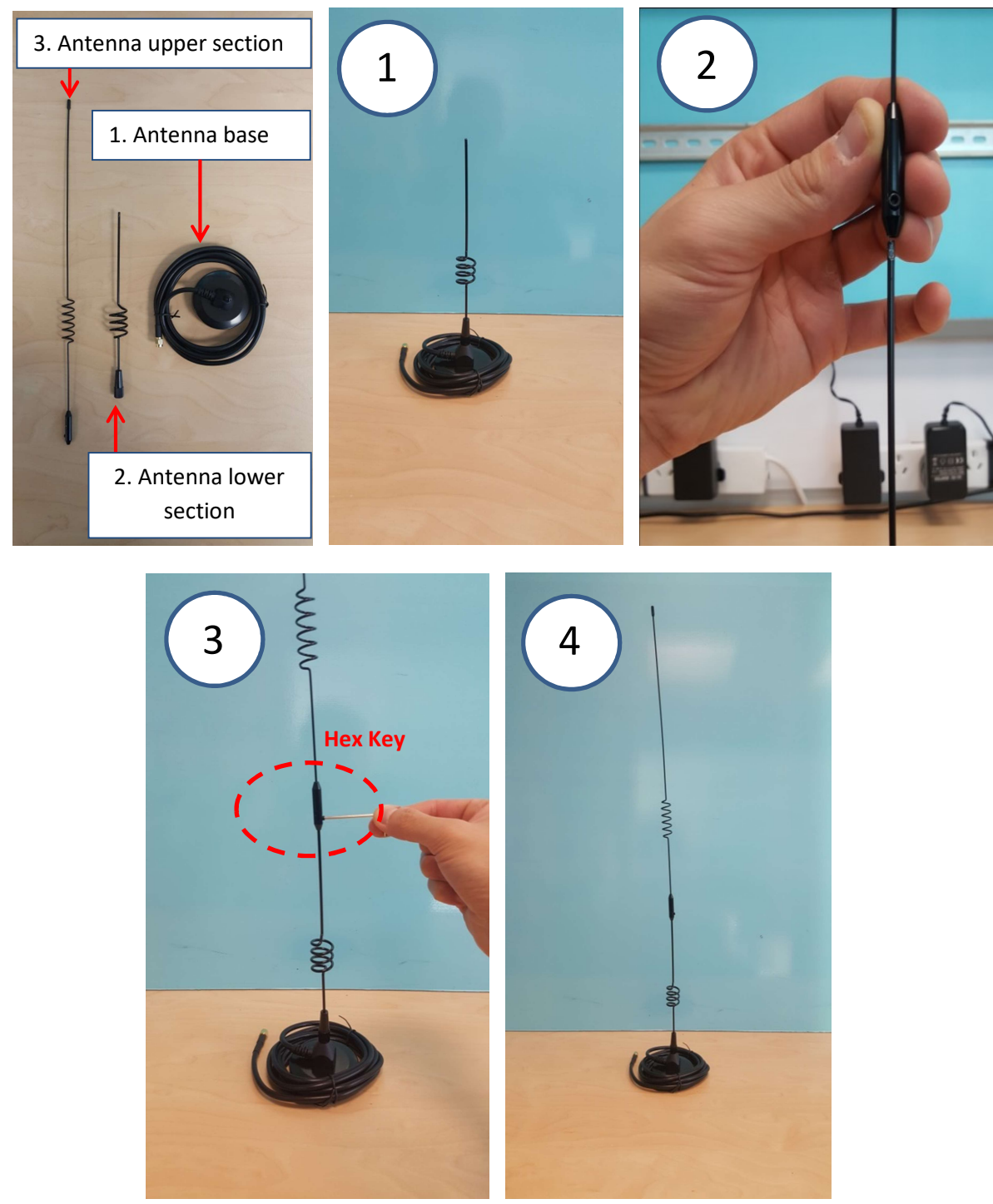


WiFi antenna is mounted  
horizontally

#### **Note:**

1. Please connect the antenna before energizing the router to avoid impedance mismatching which may result in poor signal.
2. Connect the 10dBi network antenna (the one with magnetic base) to **Main 3G/4G** interface while the Wifi antennas to **AUX/WiFi** interface port. Wrong connection will result in poor signal
3. Please untie the cable of antenna, otherwise the signal will be influenced.

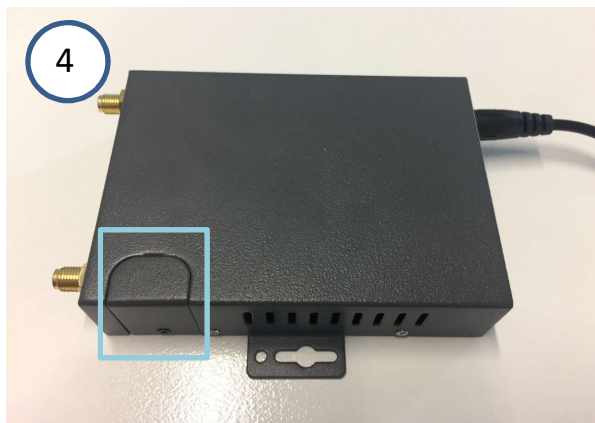
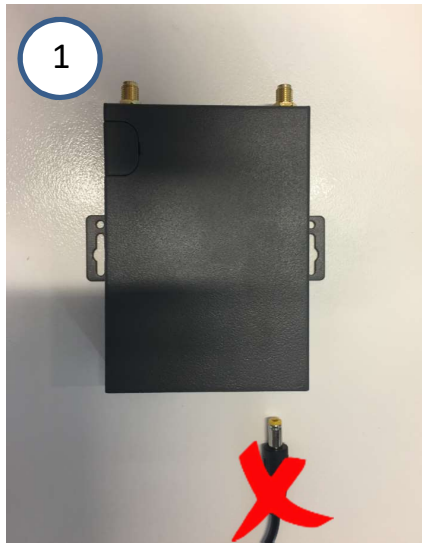
## 2. High gain antenna (10dBi) install



1. Screw on the lower antenna section to the antenna base.
2. Place the upper antenna section onto the lower antenna section.  
**Ensure the screw lines up with the flat surface of the lower section.**
3. Screw and tighten the upper antenna section to the top of the lower section.
4. Check the upper section is secured tightly by pulling gently upwards. You have now successfully setup the antenna and ready to connect.

**Note:** You will need a 2mm hex key

## SIM Card Installation



1. Please **do not** power up the router before installing the Sim Card
2. On the side of the router, remove the screw to open the Sim card slot cover  
**Ensure the right size of the screwdriver is used**
3. Insert the Sim Card with correct SIM card direction  
**Ensure the Sim Card insert position matches the illustrated Sim Card profile shown at the bottom of the slot.**  
**Ensure the Sim Card is pushed to the end. Standard Size Sim Card is required.**
4. Reinstall the SIM card cover in order to protect the SIM card during router operation

**Note:** You will need a #0 OR #1 Cross Screwdriver